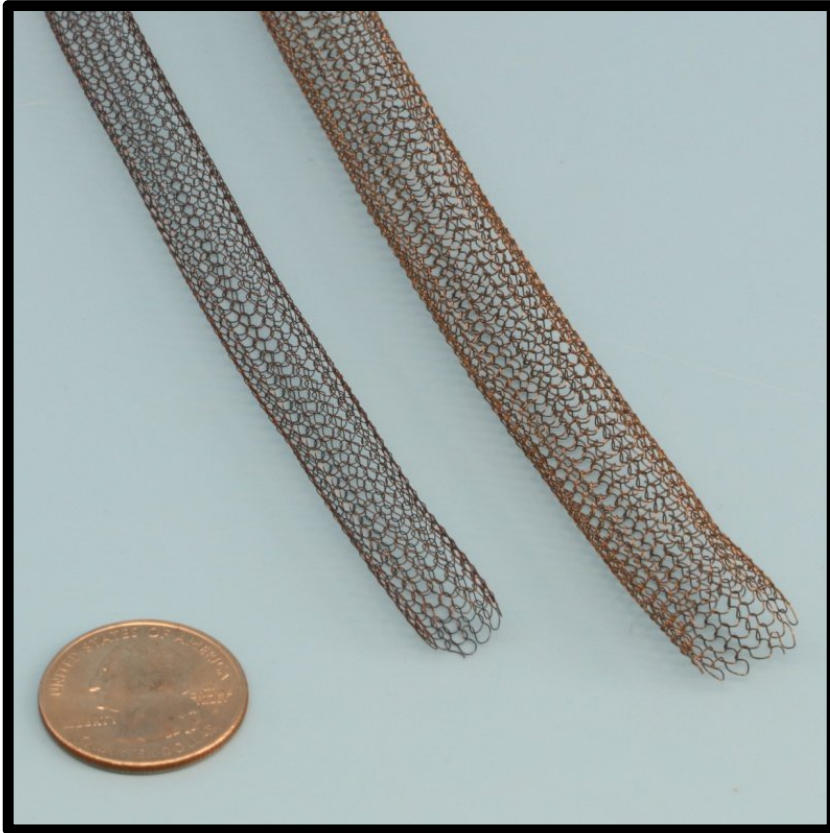




Stainless Steel Hollow Knitted Mesh Sleeve

1200°F / 648°C:



- Excellent Compressability and pushback with no compression set.
- Provides abrasion protection.
- Excellent EMI / RFI Gasket.
- Used as a bulb material in some tadpole and gasket ropes instead of solid mesh rope for added compressability of the bulb.
- 304 Stainless

304 Stainless Steel Hollow Knitted Mesh Sleeve				
ID Size inch / mm		Part Number	Feet per Carton	Price per Carton
1/4"	6	S-SS-HOLLOW-M006-04	1000	\$ 1600.00
3/8"	10	S-SS-HOLLOW-M010-06	1000	\$ 1700.00
1/2"	13	S-SS-HOLLOW-M013-08	500	\$ 1065.00
5/8"	16	S-SS-HOLLOW-M016-10	500	\$ 1115.00
3/4"	19	S-SS-HOLLOW-M019-12	500	\$ 1150.00

Please call for additional discount pricing when ordering more than 2 cartons.