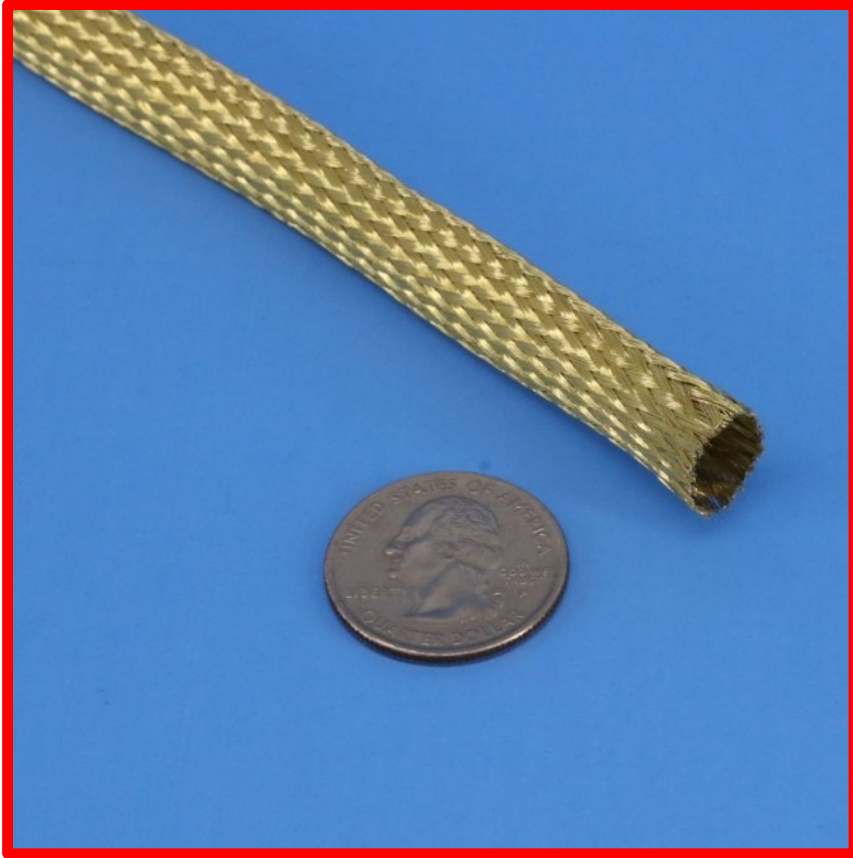




Brass Metal Braided Sleeve; Tubular
HoseSaver™ / CableSaver™ : 1472°F / 800°C



- Made from brass (copper/zinc alloy).
- Antimicrobial.
- EMI / RFI Gasket & Sleeve.
- Provides rodent protection for burial cables and hoses.
- Braid angle allows for size expansion.
- Clamps or tape can hold sleeve tight to underlying wire, cable or hose.
- Supplied in flattened form, spooled. Easily re-tubularized.
- Popular for improving aesthetic appearance of hoses and wiring on automotive and industrial equipment.

Brass Braided Sleeve HoseSaver™ / CableSaver™					
Part Number	Nominal ID inch / mm	ID Range inch / mm		Spool Length, feet Bulk / Small Spool	Price per Spool Bulk / Small
S-METAL-BRA-0.125-M0031-X	1/8 / 3.1	1/8" – 1/4"	3.1 - 6	250 / 25	\$ 337.50 / \$ 46.25
S-METAL-BRA-0.250-M006-X	1/4 / 6	1/4" – 3/8"	6 - 10	100 / 25	\$ 362.50 / \$ 103.12
S-METAL-BRA-0.375-M010-X	3/8 / 10	3/8" – 3/4"	10 – 19	100 / 25	\$ 380.00 / \$ 107.50
S-METAL-BRA-0.500-M013-X	1/2 / 12.7	1/2" – 1"	12.7 - 25	100 / 25	\$ 497.00 / \$ 137.50

Wall Thickness: 0.125 ID - .015". 0.250 ID - .027". 0.375 ID - .015". 0.500 ID - .020"

For the "X" value: use "B" for Bulk Spool size, use "S" for Small Spool size